

20W CO2 Laser Marker

Product Description

Laserwares's 20W CO2 laser marking machine uses an advanced RF metal laser tube and high-speed laser scanning system with software control modules, low power consumption, and long lifetime. Maintenance-free. Widely used in tobacco, bio-pharmaceuticals, wine industry, food and beverage, health care products, electronics, arts and crafts, fashion, etc.

It provides over 100,000 hours of maintenance-free fiber laser engraving/marketing of the highest quality.



Performance Specifications

CO2 Laser Marker	Specification	Unit
Operation Wavelength	10.64	um
Nominal Output Power	20	W
Marking Depth	<2	mm
Max. Marking Speed	7000	mm/s
Marking Area ¹	75x75	mm
Min Line Width	0.05	mm
Repeatability Precision	0.01	mm
Longtime Power stability	<5	%
Power tunable Range	5-100	%
Operating Voltage	110	V
Cooling	Air	
Operating Temperature	0-40	°C
Storage Temperature	-10-60	°C
Weight	60	Kg

Note:

1. 100x100mm/140x140mm optional.

Features

- High Performance
- Long Lifetime
- High Beam Quality
- Maintenance Free
- Compact Size

Applications

- Organic Materials Marking
- Car Parts
- Arts
- Plastic Marking



**BUREAU
VERITAS**

20W CO2 Laser Marker

Other Options:



Features

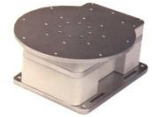
- High Performance
- Long Lifetime
- High Beam Quality
- Maintenance Free
- Compact Size

Applications

- Organic Materials Marking
- Car Parts
- Arts
- Plastic Marking

P/N: LWLM-20CM-CLD

Accessories:



*Product dimensions may change without notice. This is sometimes required for non-standard specifications.

